

# MONTHLYCATALOGUE

**B+W**  
collection



# FOODCONTAINER

- Airtight to keep food fresh
- Can be used as a bowl

**B+W**  
collection



Cap. 650 ml.  
Dia. 16x6 cms.

## PN2096B

Packing : 72 pcs / ctn  
Ctn.Dim. : 34.3X50.8X51.4 cms.  
1X20' : 23,256 pcs



Cap. 1,650 ml.  
Dia. 20.5x8 cms.

## PN2097B

Packing : 48 pcs / ctn  
Ctn.Dim. : 43.8X43.8X54 cms.  
1X20' : 13,440 pcs



[www.pioneer-industrial.com](http://www.pioneer-industrial.com)

# AIRTIGHT CANISTER

- Airtight function
- Lid can be used as a bowl

**B+W**  
collection

Cap. 600 ml.  
Cap. 1,200 ml.  
Cap. 2,000 ml.  
Cap. 3,250 ml.



## PN3301/6B

Packing : 48 pcs / ctn  
Ctn.Dim. : 33.3X44.8X40.6 cms.  
1X20' : 22,944 pcs  
Cap. 600 ml.  
Dia. 11x9 cms.

## PN3302/6B

Packing : 36 pcs / ctn  
Ctn.Dim. : 39.1X52.1X40 cms.  
1X20' : 12,780 pcs  
Cap. 1,200 ml.  
Dia. 12.5x12 cms.

## PN3303/6B

Packing : 24 pcs / ctn  
Ctn.Dim. : 45.4X60.0X33 cms.  
1X20' : 8,112 pcs  
Cap. 2,000 ml.  
Dia. 15x15 cms.

## PN3304/6B

Packing : 12 pcs / ctn  
Ctn.Dim. : 34.3X51.4X39.1 cms.  
1X20' : 5,184 pcs  
Cap. 3,250 ml.  
Dia. 16.5x18 cms.



[www.pioneer-industrial.com](http://www.pioneer-industrial.com)



# HANDYBOTTLE

- Pocket size & portable
- Modern Style

**B+W**  
collection



## PNP3414B

Packing : 48 pcs / ctn  
Ctn.Dim. : 26X38.1X41.3 cms.  
1X20' : 33,984 pcs

Cap. 500 ml.  
Dim. 6x6x19 cms.



[www.pioneer-industrial.com](http://www.pioneer-industrial.com)



# DRINKINGBOTTLE

- Automatic open & close lid
- Look neat & clean

**B+W**  
collection



Cap. 1,050 ml.  
Dia. 8x27 cms.

## PNP3502/3B

Packing : 48 pcs / ctn  
Ctn.Dim. : 33X49.5X57.8 cms.  
1X20' : 14,736 pcs



[www.pioneer-industrial.com](http://www.pioneer-industrial.com)

# HANDYBOTTLE

- Pocket size & portable
- Modern Style

**B+W**  
collection



Cap. 450 ml.  
Dia. 6.5x23.5 cms.

## PNP3415B

Packing : 48 pcs / ctn  
Ctn.Dim. : 27.3X40.6X50.2 cms.  
1X20' : 25,008 pcs



[www.pioneer-industrial.com](http://www.pioneer-industrial.com)

# DRINKING BOTTLE

- Modern Style
- Look neat & clean

**B+W**  
collection



Cap. 850 ml.  
Dia. 8x32.5 cms.

## PNP3504B

Packing : 48 pcs / ctn  
Ctn.Dim. : 33.7X50.2X68.6 cms.  
1X20' : 12,000 pcs



[www.pioneer-industrial.com](http://www.pioneer-industrial.com)

# PEDAL DUSTBIN

- Elegant design
- Quick to lift up

**B+W**  
collection



Cap. 5 lt.  
Dia. 18.3x30 cms.

## PN6026B

Packing : 6 pcs / ctn  
Ctn.Dim. : 38.7X55.9X33 cms.  
1X20' : 2,436 pcs



Cap. 11 lt.  
Dia. 26x38 cms.

## PN6023/3B

Packing : 4 pcs / ctn  
Ctn.Dim. : 52.7X52.7X40.6 cms.  
1X20' : 1,028 pcs



[www.pioneer-industrial.com](http://www.pioneer-industrial.com)





# DUSTBIN SWINGTOP

- Stylish design
- Hygienic & easy clean

**B+W**  
collection



Cap. 5 lt.  
Dia. 18x28 cms.

## PN6026/2B

Packing : 36 pcs / ctn  
Ctn.Dim. : 38.7X57.8X66 cms.  
1X20' : 7,056 pcs



Cap. 11 lt.  
Dia. 25.5x35.5 cms.

## PN6023/2B

Packing : 12 pcs / ctn  
Ctn.Dim. : 27.3X52.7X73.7 cms.  
1X20' : 3,276 pcs



[www.pioneer-industrial.com](http://www.pioneer-industrial.com)

# CUTTINGBOARD

- Sleek & slim
- Simply lifting & handling



**B+W**  
collection



Dim. 21x28x0.19 cms.

## PN620

Packing : 72 pcs / ctn  
Ctn.Dim. : 22.9X33.7X20.3 cms.  
1X20' : 133,272 pcs



[www.pioneer-industrial.com](http://www.pioneer-industrial.com)

# COLANDER

- Easy to lift & pour
- One stop operated station

**B+W**  
collection



Cap. 4.4 lt.  
Dim. 30x28x17 cms.

## PN898B

Packing : 48 pcs / ctn  
Ctn.Dim. : 31.8X62.2X45.1 cms.  
1X20' : 15,600 pcs



[www.pioneer-industrial.com](http://www.pioneer-industrial.com)



# PEPPERGRINDER

- Easy to use
- Automatic cap to open & close

**B+W**  
collection



Dia. 4.5x14 cms.

## PN90138B-PS

Packing : 48 pcs / ctn  
Ctn.Dim. : 19.5X30X31 cms.  
1X20' : 77,328 pcs



[www.pioneer-industrial.com](http://www.pioneer-industrial.com)

# SQUAREBASKET

- Easy to carry
- Perform basin function

**B+W**  
collection



Cap. 25.7 lt.  
Dim. 32x32x37 cms.

## PN841B

Packing : 12 pcs / ctn  
Ctn.Dim. : 34.3X41.9X77.5 cms.  
1X20' : 3,120 pcs



Cap. 42 lt.  
Dim. 36x36x50 cms.

## PN842B

Packing : 12 pcs / ctn  
Ctn.Dim. : 36.8X45.7X96.5 cms.  
1X20' : 2,136 pcs



[www.pioneer-industrial.com](http://www.pioneer-industrial.com)



# SHOEBOX

- Access your shoes with ease
- Securely stackable

**B+W**  
collection



Dim. 22.5x32x18 cms.

## PN3119CB

Packing : 12 pcs / ctn  
Ctn.Dim. : 32.4X47.6X41.9 cms.  
1X20' : 5,376 pcs



Dim. 22.5x38x18 cms.

## PN3120CB

Packing : 12 pcs / ctn  
Ctn.Dim. : 32.4X47.6X45.7 cms.  
1X20' : 4,932 pcs



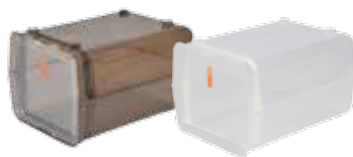
[www.pioneer-industrial.com](http://www.pioneer-industrial.com)



# SHOEBOX

- Access your shoes with ease
- Securely stackable

**B+W**  
collection



Dim. 22x31x18.5 cms.

## PN3117CB

Packing : 12 pcs / ctn  
Ctn.Dim. : 27.3X38.1X43.2 cms.  
1X20' : 7,740 pcs



Dim. 25x37x18.5 cms.

## PN3118CB

Packing : 12 pcs / ctn  
Ctn.Dim. : 30.5X41.9X44.5 cms.  
1X20' : 6,120 pcs



[www.pioneer-industrial.com](http://www.pioneer-industrial.com)



**PIONEER INDUSTRIAL**  
CORPORATION LIMITED THAILAND

# SHARECHAIR

- For kid and adult
- Can be used as Stepper



**B+W**  
collection



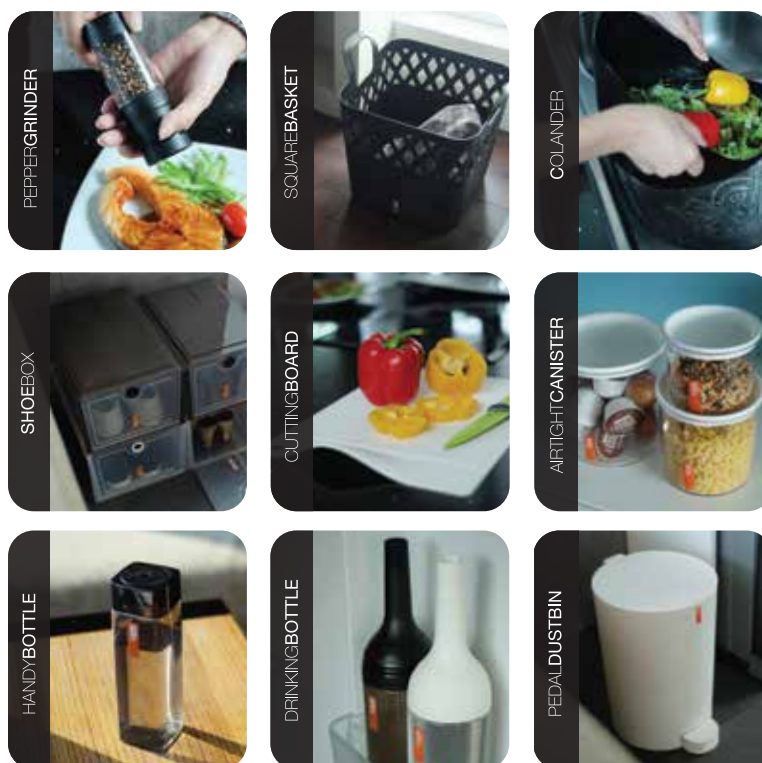
Dim. 44x55x45.5 cms.

## PN9147B

Packing : 6 pcs / ctn  
Ctn.Dim. : 45.1X59.1X71.1 cms.  
1X20' : 918 pcs



[www.pioneer-industrial.com](http://www.pioneer-industrial.com)



MONTHLYCATALOGUE2016



**174/1-2 Silom Rd., Bangkok 10500 Thailand**

Tel. (662) 2339781-5, 2341057-9, 2336617-9, 2367851-3

Fax. (662) 2342793, 2367894, 2367853

E-mail : pioneer@pioneer-industrial.com Web: www.pioneer-furniture.com

www.pioneer-industrial.com

